

LIEBHERR

LR1300SXW CRAWLER CRANE

LIFTING CAPACITY FROM 300.5t at 5m R TO 8.1t at 100m R



JUNCTION ROAD TRANSPORT
INCORPORATING CRANE MASTERS NZ LTD

Delivering growth and success to our customers since 1992



JUNCTION ROAD TRANSPORT
INCORPORATING CRANE MASTERS NZ LTD



BASIC MACHINE

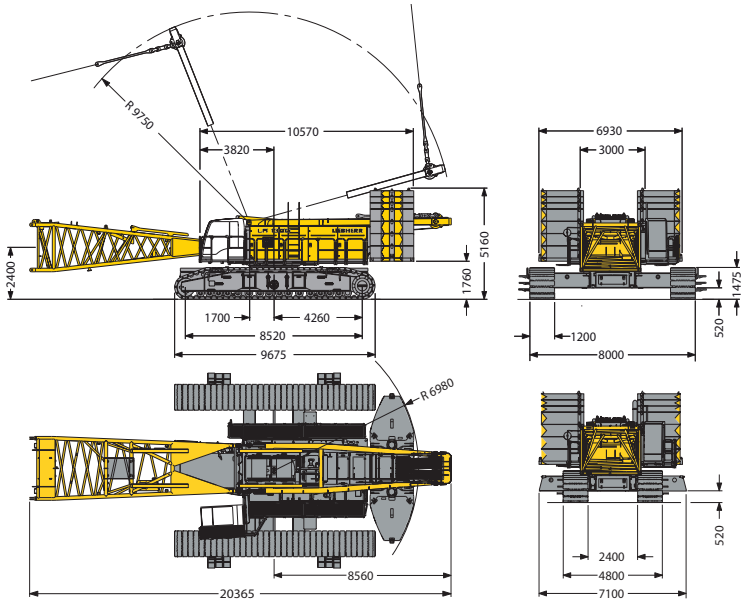
with undercarriage

The Liebherr LR 1300 SXW, a version of this 300-metric ton crane with new equipment. Its main boom permits much greater loads to be handled by both the main boom and jib. The LR 1300 SXW also has a heavy duty jib of new design, intended for installation and maintenance work on wind power installations. For this work it is equipped with a narrow telescopic undercarriage that permits travel movements even where space is limited.

The new heavy duty jib is 8 metres long, and rated for a maximum load capacity of 117 t. At the maximum possible combination of 113 m main boom and 8 m heavy duty jib, sheave height is 123 metres, and even at this height can handle loads of up to 42 t.

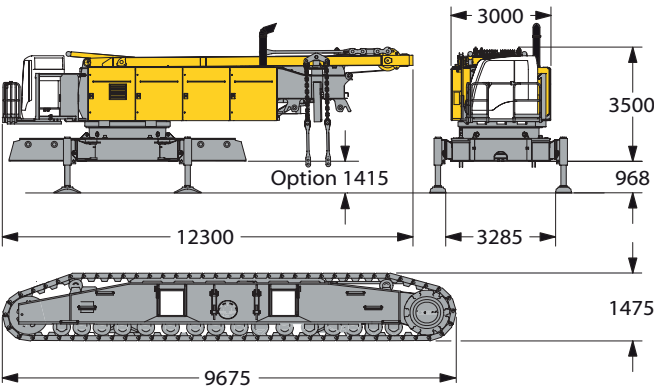
The standard width across the LR 1300 SXW's tracks is 8 metres, but the undercarriage can be closed up to a width of only 4.8 m. The track width adjustment means that the crane can travel fully equipped, including the boom/jib and complete counterweight. This avoids the need for the wind power supply company to provide wider hard-surfaced travel paths, and also saves time because equipment and attachments do not have to be removed and re-installed when crane travel takes place. Among the advantages of the LR 1300 SXW is a big range of multifunctional boom/jib systems with exceptional performance data. The maximum boom/jib length available for the LR 1300 SX is 172 metres. The LR 1300 SXW is powered by a 450 kW (612 hp) Liebherr diesel engine.

Please contact me to discuss any lift projects that we could be of added value to you.



TRANSPORT DIMENSIONS & WEIGHTS

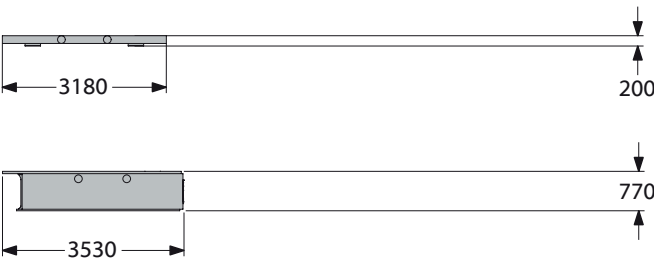
BASIC MACHINE



BASIC MACHINE	
with A-frame, 2x 150 kN crane winches, without boom foot, hoisting ropes, basic counterweight and crawlers	
Width	3000 mm
Weight	46500 kg

CRAWLER	
Flat track shoes	1200 mm
Width	1200 mm
Weight	23000 kg

CARBODY COUNTERWEIGHTS



CARBODY COUNTERWEIGHTS		2x
Width	1800 mm	
Weight	6200 kg	

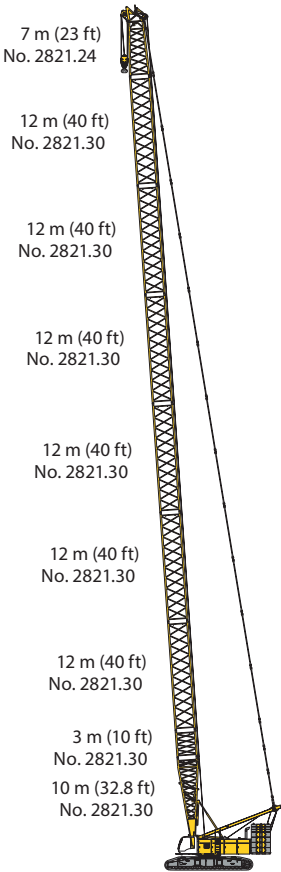
CARBODY COUNTERWEIGHTS		2x
Width	1800 mm	
Weight	20100 kg	

LIFT CHART FOR MAIN BOOM (NO.2821.XX)

104T COUNTERWEIGHT AND 52.6T CARBODY COUNTERWEIGHT

Boom length in (m)															
Radius	20	23	26	32	38	44	50	56	62	68	74	80	83	86	Radius
(m)	t	t	t	t	t	t	t	t	t	t	t	t	t	t	(m)
4.3	300.5														4.3
5	300.5	292.6	295.3												5
6	261.5	260.0	256.1	245.5	236.5	213.4									6
7	225.5	225.3	222.0	215.8	206.9	198.3	189.3	169.3							7
8	195.9	195.7	195.2	191.1	184.6	178.4	168.6	161.3	151.1	135.3					8
9	172.9	172.8	172.2	171.8	166.0	160.2	152.7	145.0	137.8	131.1	118.7	103.1	95.6	88.9	9
10	154.5	154.4	153.8	153.4	151.1	143.6	136.5	130.1	124.0	118.3	111.8	101.7	95.6	88.9	10
12	126.8	126.7	126.2	125.8	122.6	117.3	112.1	107.4	102.8	98.5	94.4	90.5	87.5	83.3	12
14	107.0	106.9	106.5	106.1	102.8	98.7	94.7	91.0	87.3	83.9	80.5	77.4	75.8	74.3	14
16	89.2	89.3	89.2	89.1	88.1	84.8	81.5	78.5	75.5	72.6	69.8	67.1	65.8	64.5	16
18	75.6	75.8	75.6	75.5	75.1	74.1	71.3	68.7	66.1	63.7	61.2	58.9	57.7	56.6	18
20	65.2	65.5	65.4	65.3	64.8	64.5	63.1	60.8	58.5	56.4	54.2	52.2	51.1	50.1	20
24		50.8	50.8	50.8	50.3	49.9	49.3	48.8	47.1	45.3	43.5	41.8	40.9	40.0	24
26			45.3	45.4	44.9	44.5	43.9	43.4	42.6	41.0	39.3	37.7	36.9	36.0	26
32				33.7	33.4	33.0	32.4	31.8	31.2	30.6	29.6	28.3	27.6	26.8	32
38					25.7	25.4	24.8	24.3	23.6	23.0	22.3	21.6	21.0	20.4	38
42						21.6	21.0	20.5	19.8	19.2	18.5	17.9	17.5	17.0	42
50							15.3	15.0	14.3	13.7	13.0	12.4	12.0	11.6	50
55								12.3	11.7	11.1	10.4	9.7	9.4	9.0	55
60									9.4	8.9	8.2	7.5	7.2	6.8	60
65										7.0	6.3	5.7	5.4	5.0	65
70											4.7	4.1	3.7	3.2	70
75												2.5	2.1		75

TLT 10525129 M00000 Preliminary 5



Main boom No.2821.xx 92 m

LIFT CHART FOR MAIN BOOM (NO.2821.XX)

124T COUNTERWEIGHT AND 52.6T CARBODY COUNTERWEIGHT

Below lift chart is for reference only. For actual lift duty and complete chart with all available configurations please refer to lift chart in operator's cab or manual.

Boom length in (m)																		
Radius	20	23	26	32	38	44	50	56	62	68	74	80	83	86	89	92	Radius	
(m)	t	t	t	t	t	t	t	t	t	t	t	t	t	t	t	t	(m)	
6.4							189.3										6.4	
7							189.3	169.3									7	
8					184.6	178.4	168.6	161.3	151.1	135.3							8	
9					166.0	160.2	154.1	146.1	138.5	131.7	118.7	103.1	95.6	88.9			9	
10			161.2	156.5	152.3	145.7	139.9	134.5	127.6	120.2	111.8	101.7	95.6	88.9	83.5	78.3	10	
12	136.7	136.7	134.7	132.8	127.3	124.0	119.6	113.5	108.4	103.5	97.8	91.8	87.5	83.3	79.3	75.4	12	
14	115.5	115.5	115.0	112.8	110.3	106.2	102.8	99.0	94.1	89.0	84.1	81.3	79.4	77.1	75.0	71.7	14	
16	99.5	99.5	99.1	98.2	95.6	93.5	89.6	86.2	82.8	78.9	73.9	71.3	69.5	67.5	65.9	63.9	16	
18	85.8	86.0	85.9	85.8	84.2	82.3	79.9	76.4	73.0	69.6	66.1	64.1	62.3	60.2	58.7	56.8	18	
20	74.2	74.5	74.4	74.3	73.8	73.2	71.3	68.8	65.4	61.8	59.1	57.4	56.3	54.5	53.3	51.4	20	
22		65.4	65.3	65.3	64.8	64.4	63.8	62.0	59.5	55.8	53.2	51.6	50.6	49.1	48.0	46.7	22	
24		58.0	58.0	58.0	57.5	57.1	56.5	56.0	54.0	51.0	48.6	46.8	45.8	44.4	43.4	42.2	24	
26			51.9	52.0	51.5	51.1	50.5	50.0	49.3	46.6	44.8	43.0	41.8	40.6	39.5	38.4	26	
32				38.9	38.6	38.2	37.6	37.0	36.4	35.8	35.0	33.5	32.8	31.9	31.0	30.1	32	
38					30.0	29.7	29.1	28.6	27.9	27.3	26.6	25.9	25.5	24.8	24.2	23.6	38	
44						23.6	23.1	22.6	21.9	21.3	20.5	19.9	19.6	19.2	18.9	18.3	44	
50							18.5	18.1	17.4	16.8	16.1	15.4	15.1	14.7	14.4	14.0	50	
55								15.1	14.5	13.9	13.1	12.6	12.2	11.7	11.5	11.0	55	
60									12.1	11.5	10.8	10.2	9.8	9.3	8.9	8.3	60	
65										9.4	8.7	7.9	7.5	6.9	6.6	6.1	65	
70											6.7	5.9	5.5	4.9	4.6	4.1	70	
75												4.1	3.7	3.2	2.9	2.3	75	
80													2.1				80	

TLT 10525129 M00000 Preliminary 5

LIFT CHART

FIXED JIB 8m (NO.1507.20) OFFSET 28°

124T COUNTERWEIGHT AND 52.6T CARBODY COUNTERWEIGHT

MAIN BOOM 50m		MAIN BOOM 53m		MAIN BOOM 56m		MAIN BOOM 59m		MAIN BOOM 62m		MAIN BOOM 65m	
Radius (m)	t	Radius (m)	t	Radius (m)	t	Radius (m)	t	Radius (m)	t	Radius (m)	t
8	117.0	8.1	117.0	8.2	117.0	8.3	117.0	8.5	117.0	8.6	117.0
10	117.0	10	117.0	10	117.0	10	117.0	10	115.2	10	109.3
12	110.9	12	110.2	12	110.6	12	111.9	12	108.2	12	103.7
14	103.6	14	102.5	14	99.9	14	97.5	14	95.2	14	92.6
16	89.1	16	88.8	16	87.2	16	85.7	16	84.2	16	82.7
20	70.4	20	69.3	20	68.1	20	66.9	20	65.7	20	64.7
24	56.9	24	56.0	24	55.0	28	44.7	28	43.8	28	43.1
28	45.9	28	45.7	28	45.4	32	36.9	32	36.5	32	36.1
32	37.7	32	37.7	32	37.2	36	30.7	36	30.3	36	30.1
36	31.5	36	31.5	36	31.0	40	25.9	40	25.6	40	25.3
40	26.8	40	26.8	40	26.2	44	22.0	44	21.6	44	21.4
44	22.9	44	22.9	44	22.3	48	18.8	48	18.4	48	18.2
48	19.6	48	19.6	48	19.1	55	14.3	55	13.9	55	13.7
50	18.2	55	18.2	50	14.6	60	11.8	60	11.4	65	8.9

MAIN BOOM 68m		MAIN BOOM 71m		MAIN BOOM 74m		MAIN BOOM 77m		MAIN BOOM 80m		MAIN BOOM 83m	
Radius (m)	t	Radius (m)	t	Radius (m)	t	Radius (m)	t	Radius (m)	t	Radius (m)	t
8.7	103.7	8.8	97.8	8.9	91.8	9.0	86.8	9.2	81.9	9.3	76.9
10	103.3	10	97.8	10	91.8	10	86.8	10	81.9	10	76.9
12	97.8	12	92.4	12	87.0	12	82.7	12	78.5	12	74.3
14	88.8	14	85.4	14	81.5	14	78.4	14	74.8	14	71.1
16	81.3	16	79.1	16	75.9	16	73.8	16	70.8	16	67.5
20	63.5	20	62.4	20	61.3	20	60.3	20	59.2	20	58.2
28	42.3	28	41.5	28	40.7	28	39.9	28	39.1	28	38.4
32	35.4	36	29.3	36	28.6	36	28.1	36	27.4	36	26.7
36	29.7	40	24.5	40	24.2	40	23.8	40	23.2	40	22.5
40	24.9	44	20.7	44	20.3	44	20.1	44	19.6	44	19.0
44	21.0	48	17.5	48	17.1	48	16.8	48	16.4	48	16.1
48	17.8	55	13.0	55	12.6	55	12.3	55	11.9	55	11.5
55	13.3	65	8.0	65	7.4	65	7.1	65	6.6	65	6.2
65	8.4	70	5.8	75	3.5	75	3.2	75	2.7	75	2.3

TLT 10525129 M00000 Preliminary 5

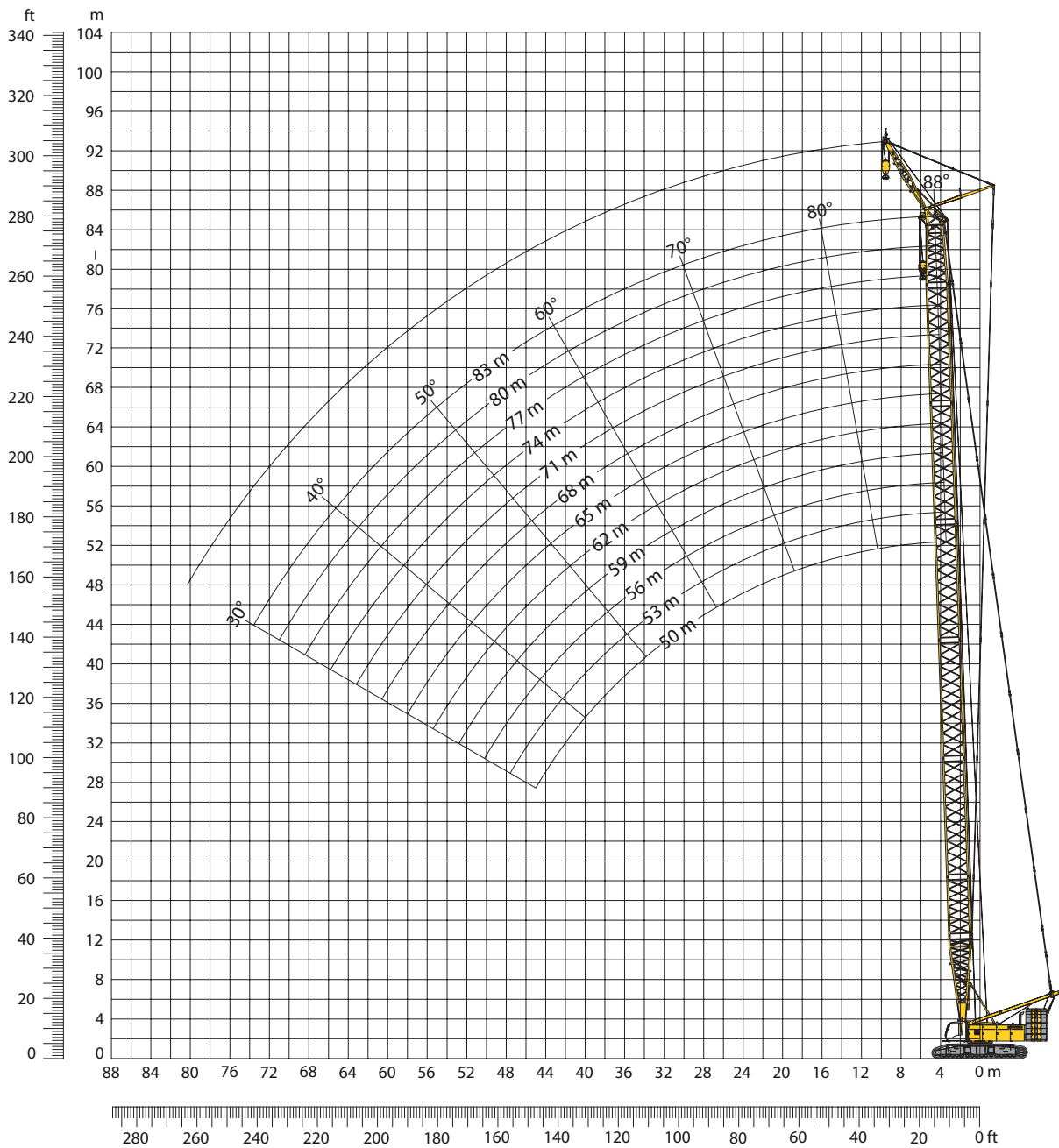
Capacities in metric tons with fixed jib (No. 1507.20) 124 t counterweight. Above lift chart is for reference only.
 For actual lift duty and complete chart with all available configurations please refer to lift chart in operator's cab or manual



WORKING RANGE

MAIN BOOM 88° - 30°

FIXED JIB (No. 1507.20) OFFSET 28°



MAIN BOOM CONFIGURATION (NO.2821.XX)

Configuration for boom lengths between 20m and 83m														
	LENGTH	AMOUNT OF BOOM EXTENSIONS												
BOOM FOOT									1	1	1	1	1	1
BOOM INSERT									1		1		1	
BOOM INSERT									1				1	1
BOOM INSERT									2	3	3	3	4	5
BOOM HEAD									1	1	1	1	1	1
BOOM LENGTH (M)									50	53	56	59	62	83

LIFT CHART MAIN BOOM (NO.2821XX)

124 T COUNTERWEIGHT AND 52.6T CARBODY COUNTERWEIGHT AND MAX. 120 T SUSPENDED COUNTERWEIGHT AT 13M RADIUS

MAIN BOOM 44m

Suspended counterweight in metric tons at 13m radius					
Radius	0	50	75	90	120
(m)	t	t	t	t	t
12	98.2	157.6	187.0	204.8	230.6
14	80.6	130.5	155.2	170.1	199.8
16	68.1	110.8	132.1	144.9	170.7
18	63.1	100.8	119.4	130.8	153.2
20	55.3	88.6	105.2	115.4	135.3
22	48.6	78.8	93.9	102.9	121.0
24	43.5	70.9	84.6	92.7	109.2
26	38.9	64.1	76.7	84.3	99.4
28	35.1	58.5	70.1	77.0	90.9
30	31.7	53.5	64.3	70.9	83.8
32	29.1	49.2	59.5	65.4	77.5
34	26.5	45.4	55.0	60.6	72.1
36	24.2	42.2	51.1	56.5	67.2
38	22.2	39.2	47.6	51.7	62.8
40	20.3	36.5	44.6	49.3	59.0
42	18.7	34.0	41.7	46.2	55.4
44	17.2	31.8	39.1	43.4	50.8

MAIN BOOM 50m

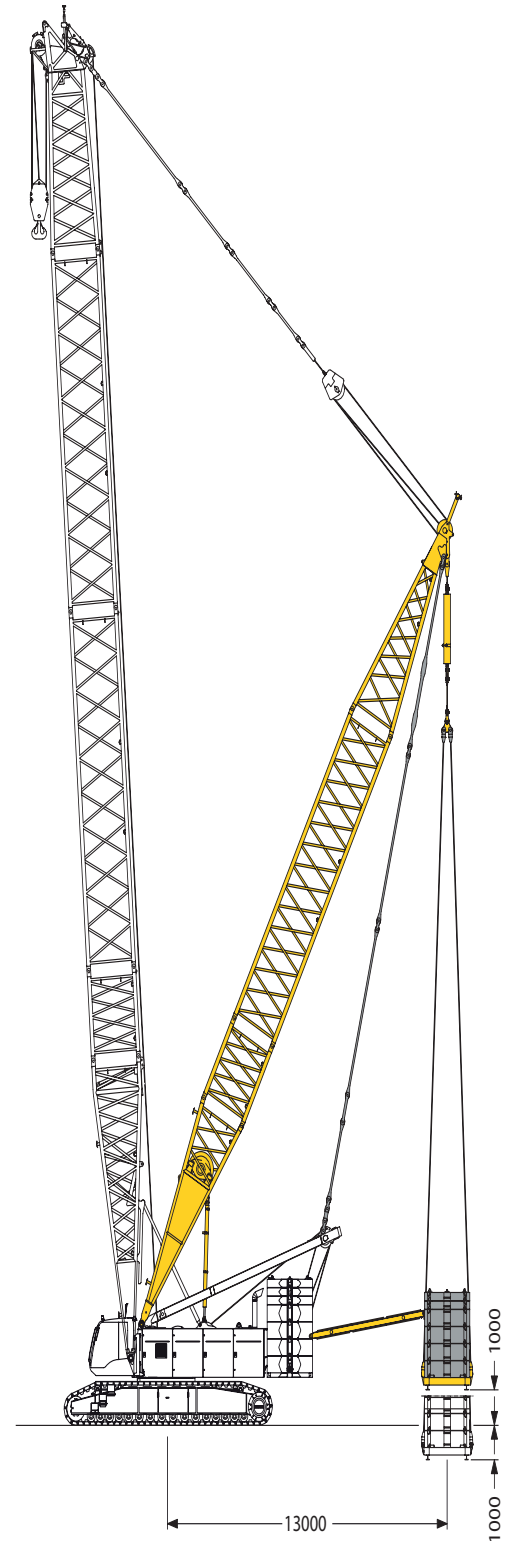
Suspended counterweight in metric tons at 13m radius					
Radius	0	50	75	90	120
(m)	(t)	(t)	(t)	(t)	(t)
11	109.3				
12	97.8	157.1	182.5	182.5	
14	80.1	129.9	154.7	169.5	175.6
16	67.5	110.2	131.4	144.4	168.7
18	58.1	95.4	114.2	125.4	147.8
20	50.4	83.9	100.6	110.5	130.6
22	48.1	78.2	93.3	102.5	120.4
24	43.0	70.3	84.0	92.1	108.6
26	38.4	63.5	76.0	83.7	98.8
28	34.5	57.9	69.5	76.4	90.3
30	31.1	52.9	63.7	70.3	83.2
32	28.5	48.6	58.9	64.8	76.9
34	25.9	45.0	54.4	60.0	71.5
36	23.6	41.7	50.5	55.9	66.6
38	21.6	38.6	47.0	52.1	62.2
40	19.8	36.0	44.1	48.7	58.4
42	18.2	33.5	41.2	45.7	54.9
44	16.7	31.3	38.6	43.0	51.7
46	15.3	29.4	36.3	40.0	48.7
48	14.5	27.5	34.2	38.2	46.0
50	13.4	25.8	32.2	36.0	43.7
55		22.0	27.8	31.3	38.2

MAIN BOOM 56m

Suspended counterweight in metric tons at 13m radius					
Radius	0	50	75	90	120
(m)	t	t	t	t	t
11	109.3	174.9	187.1	187.1	
12	97.8	157.1	182.5	182.5	
14	80.1	129.9	154.7	169.5	175.6
16	67.5	110.2	131.4	144.4	168.7
18	58.1	95.4	114.2	125.4	147.8
20	50.4	83.9	100.6	102.5	130.6
22	48.1	78.2	93.3	110.5	120.4
24	43.0	70.3	84.0	92.1	108.6
26	38.4	63.5	76.0	83.7	98.8
28	34.5	57.8	69.5	76.4	90.3
30	31.1	52.9	63.7	70.3	83.2
32	28.5	48.6	58.9	64.8	76.9
34	25.9	45.0	54.4	60.0	71.5
36	23.9	41.7	50.5	55.9	66.6
38	21.6	38.6	47.0	52.1	62.2
40	19.8	36.0	44.1	48.7	58.4
42	18.2	33.5	41.2	45.7	54.9
44	16.7	31.3	38.6	43.0	51.7
46	15.3	29.4	36.3	40.5	48.7
48	14.5	27.5	34.2	38.2	46.0
50	13.4	25.8	32.2	36.0	43.7
55	10.7	22.0	27.8	31.3	38.2

MAIN BOOM 68m

Suspended counterweight in metric tons at 13m radius					
Radius	0	50	75	90	120
(m)	(t)	(t)	(t)	(t)	(t)
9	141.7				
10	123.2	144.5	144.5		
12	97.1	139.4	139.4	139.4	
16	66.7	109.4	130.8	131.4	131.4
18	57.2	94.5	113.3	124.5	126.2
20	49.5	83.0	99.7	109.6	121.8
22	43.7	73.8	88.6	97.7	115.6
24	38.5	65.9	79.6	88.0	104.2
26	34.4	59.7	72.2	79.6	94.7
28	33.6	57.1	68.6	75.5	89.4
30	30.3	52.1	62.8	69.4	82.3
32	27.7	47.7	58.0	63.9	76.0
34	25.1	44.2	53.6	59.3	70.6
36	22.8	40.8	49.6	55.1	65.7
38	20.8	37.8	46.2	51.3	61.3
40	19.0	35.1	43.2	47.9	57.6
44	15.9	30.5	37.8	42.2	50.8
48	13.8	26.8	33.4	37.4	45.2
50	12.6	25.1	31.4	35.2	42.9
55	10.1	21.4	27.2	30.6	37.6
60	7.9	18.3	23.6	26.8	33.1
65	6.1	15.7	20.5	23.5	29.3



Capacities in metric tons with fixed jib (No. 1507.20) 124 t counterweight. Above lift chart is for reference only. For actual lift duty and complete chart with all available configurations please refer to lift chart in operator's cab or manual.

DERRICK EQUIPMENT WITH SUSPENDED COUNTERWEIGHT



JUNCTION ROAD TRANSPORT
INCORPORATING CRANE MASTERS NZ LTD

PHONE

06 3269 409 or 0274 448 513

FREEPHONE

0508 CRANEMASTER (0508 262636)

FAX

06 3269 479

ADDRESS

PO Box 4470, Palmerston North

EMAIL

shifter@jrt.co.nz

WEBSITE

www.jrt.co.nz

DDI (BARRY JAGGER)

06 359 3902

Delivering growth and success to our customers since 1992